



# 50 Mile Night Race

## Cayuga Lake Cruising Fleet

Invites

All Sailboats

To join us in an endurance race on Cayuga Lake

Friday, July 7.

Skipper's Meeting 5pm

At the South Pavilion of the Ithaca Yacht Club

Start 6pm

The race is open to **any sailboat**. There is no fee to enter. You do not need to be a Cruising Fleet or Yacht Club member. Don't worry if you do not know your boat's rating. We will figure out your handicap.

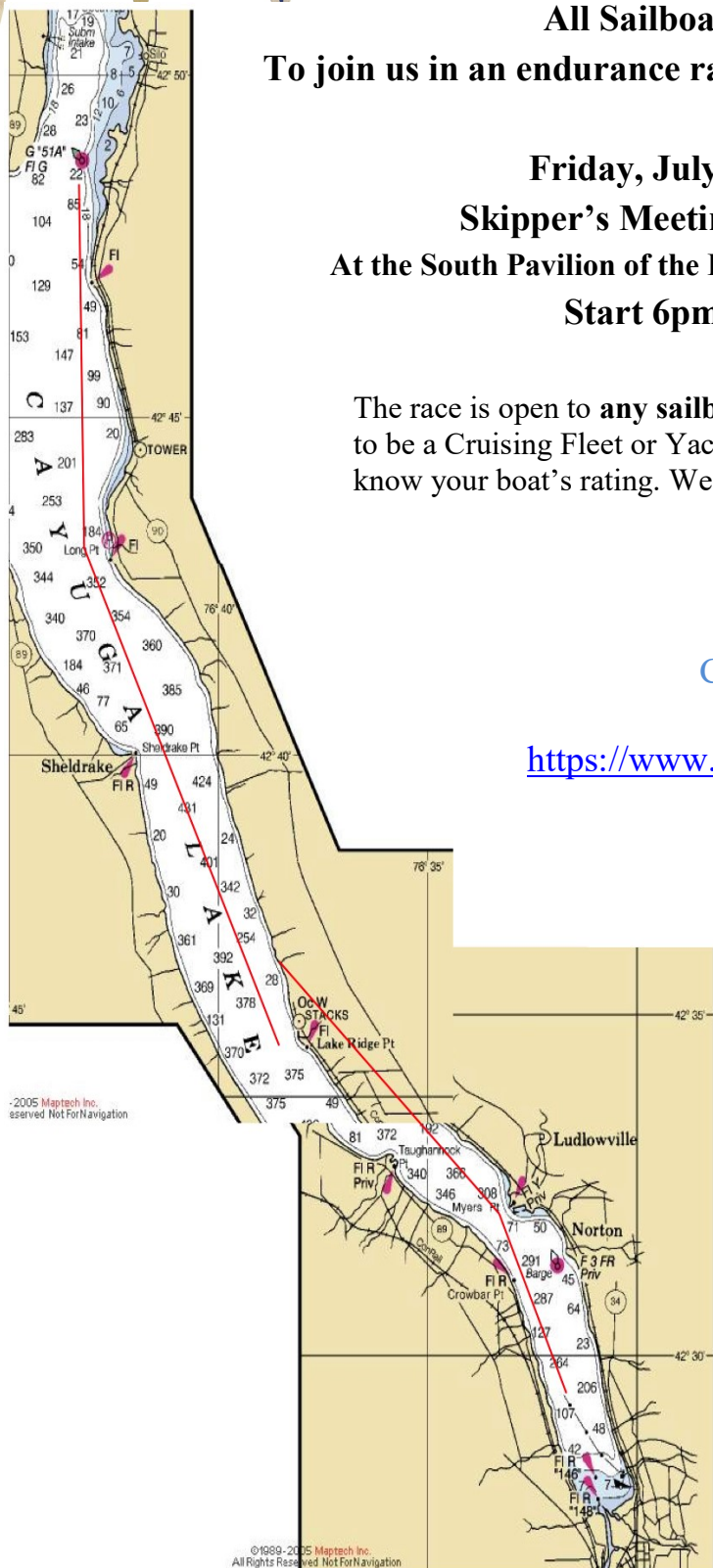
For more information, contact

**Charles Witherup**

[CayugaLakeCruisingFleet@gmail.com](mailto:CayugaLakeCruisingFleet@gmail.com)

<https://www.facebook.com/groups/CayugaLakeCF>

<http://www.cruisingfleet.org>



**The Cayuga Lake Cruising Fleet**  
**50 Miler Night Race**  
**Friday, July 7, 2017**

**SAILING INSTRUCTIONS**

**1 RULES**

The regatta will be governed by the rules as defined in the current Racing Rules of Sailing of the Cayuga Lake Cruising Fleet.

**2 RESPONSIBILITY**

It is the sole responsibility of each skipper to decide whether to start or to continue the race. Skippers are responsible for the safety of their crew. It is each boat's responsibility to ensure all safety and nighttime equipment are used and function properly. It is HIGHLY RECOMMENDED life jackets are worn and other nighttime safety precautions are implemented from dusk 'til dawn and as needed dependent upon weather and sea conditions.

**3 ENTRIES**

Any sailboat is eligible to enter. There is no fee to enter the race.

Enter by registering via email to [CayugaLakeCruisingFleet@gmail.com](mailto:CayugaLakeCruisingFleet@gmail.com) or at the Ithaca Yacht Club South Pavilion before the competitors' meeting.

**4 SIGNALS MADE ASHORE**

No Signals will be made ashore. If a postponement is needed an announcement will be made at the IYC South Pavilion, and on VHF channel 80.

**5 COMPETITOR'S MEETING**

A competitors' meeting will be held at 5:00pm at the IYC South Pavilion.

**6 THE START**

6.1 The starting line will be between Mark A (off the IYC lawn) and the Yacht Club flagpole. Boats will start in a Northerly direction.

6.2 The RC will attempt to give an accurate 5-minute warning by sound signal for the first start. This signal may also be broadcast on VHF channel 80. However, the start is determined by GPS time, not by the sound/VHF.

6.3 Competitors will record their finish times as accurately as possible, and will note the approximate position of other boats in the vicinity. They must give this information to the RC as soon as possible after the RC's boat has docked.

6.4 GPS recordings will be used to determine actual start and finish times.

**7 COURSE**

7.1 The course will be from the Start to Mark 51A (approximate location = N 42°48.843 W 76°43.234) and back to the Finish. Mark 51A shall be left to port. The total distance is approximately 50 nautical miles.

7.2 Competitors will record their times of arrival at Mark 51A as accurately as possible. They must give this information to the RC as soon as possible after the RC's boat has docked.

## **8 FINISHING LINE**

The finishing line will be between Mark A (off the IYC lawn) and the Yacht Club flagpole. Boats will finish in a Southerly direction.

## **9 TIME LIMIT**

There is no time limit for the race.

## **10 RATINGS**

The CLCF's time-on-time PHRF ratings will be used.

Boats without a PHRF certificate or rating are welcome. The race committee will try to find a rating for you.

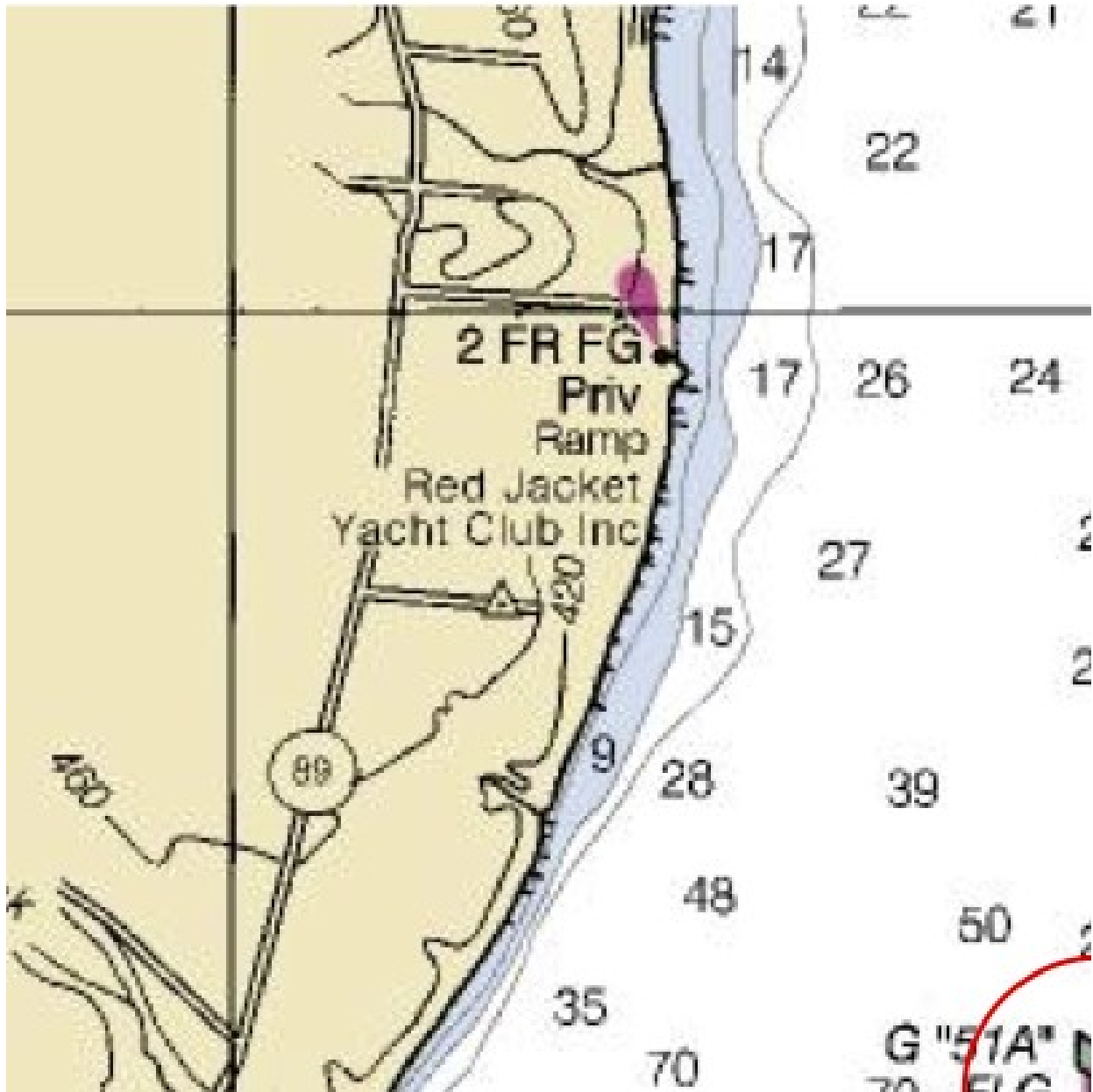
## **11 PROTESTS**

Protests shall be lodged verbally with a fleet officer at the finish, or at the IYC, within one hour after the fleet officer's boat is moored. Hearings will be held as soon as possible after the race.

## **12 TROPHIES**

A trophy will be awarded to the first boat with the lowest corrected elapsed time.

G "51A"  
42 □ 48.843 N  
76 □ 43.234 W



# 50 Miler Night Race

## Entry Form

Please email to [CayugaLakeCruisingFleet@gmail.com](mailto:CayugaLakeCruisingFleet@gmail.com)

Name of Boat

.....  
.....

Name of Skipper

.....  
.....

Email Address

.....  
.....

Phone

.....  
.....

Type of boat

.....  
.....

Do you carry a spinnaker? .....

PHRF rating (if known) .....